

Terrain Q is a noise reducing above ground drainage system. Using multilayer technology and push fit installation this system is easy to install and provides a range of benefits including acoustic and fire performance properties.



#### Terrain Q multilayer technology:

1. Blue external layer (RAL 5001) with white stripes (RAL 9003) is made from PP+UV+RF. This external layer of the pipe provides UV resistance, fire resistance performance and impact resistance.
2. Black intermediate layer (RAL 9004) made of PP+CM+RF. The mineral-reinforced plastic provides high stability, noise insulation and fire resistance performance.
3. White internal layer (RAL 9003) made of PP+AF. Resistant to high temperatures (up to 97 °C), chemical and abrasion resistance. The smooth surface is created by an anti-fouling additive, enabling an anti-encrustation protection.

### Features and Benefits

- Noise reducing properties (Fraunhofer results at 4ltr/second Air-borne = 54dB & Structure borne = 20dB)
- Fire classification B, s1-d0\*
- Low smoke density
- Resistant to temperatures from -20 up to 97°C
- UV protection in the external layer
- Anti-fouling protection in the internal layer
- High impact resistance due to pipe wall construction

### Testing and certification

The Terrain Q system has been tested and certified to the following standards;

- EN 14366. Laboratory measurement of noise from wastewater installations
- EN 13501. Fire classification of construction products and design types
- EN1451. Plastic pipes and fittings for soil and waste. Polypropylene\*\*

\*Fire classification rating according to EN13501, installed according to building regulations. We recommend Terrain Q be installed with our Terrain Firetrap Sleeves.

\*\*Fittings manufactured and certified to EN1451.

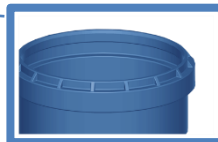
\*\*\*Some fittings are in PVC.



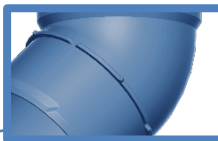
Range available in sizes 40, 50, 75, 110, 160 and 200 mm

Range includes a variety of fittings from bends, branches and reducers.

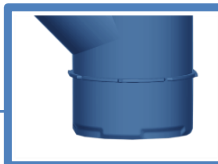
Included in the range are engineered fittings...



Angle markings at 22.5°



Insertion depth stopper



Relief to facilitate insertion