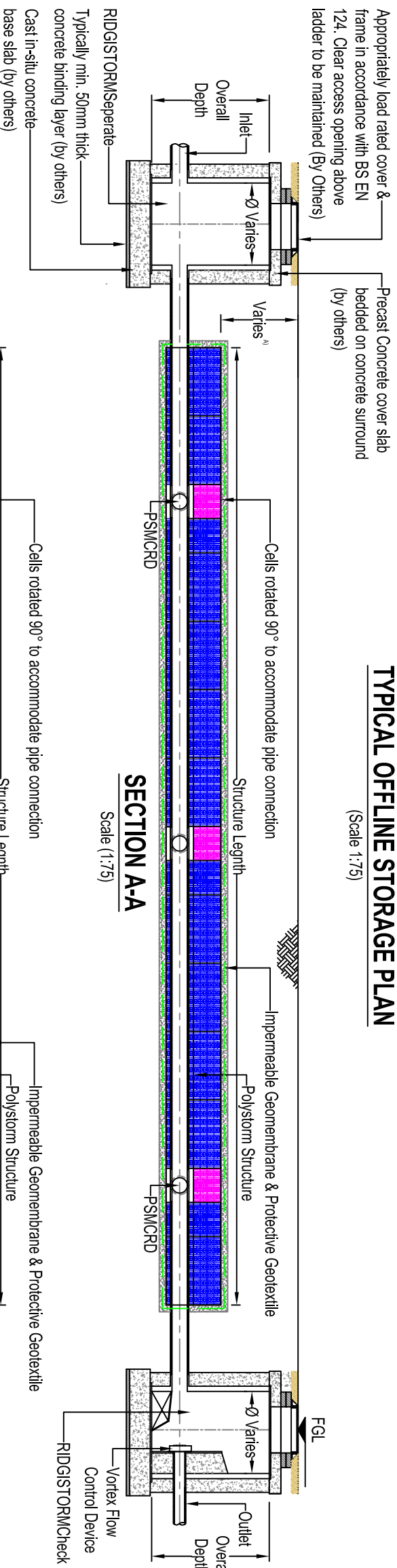


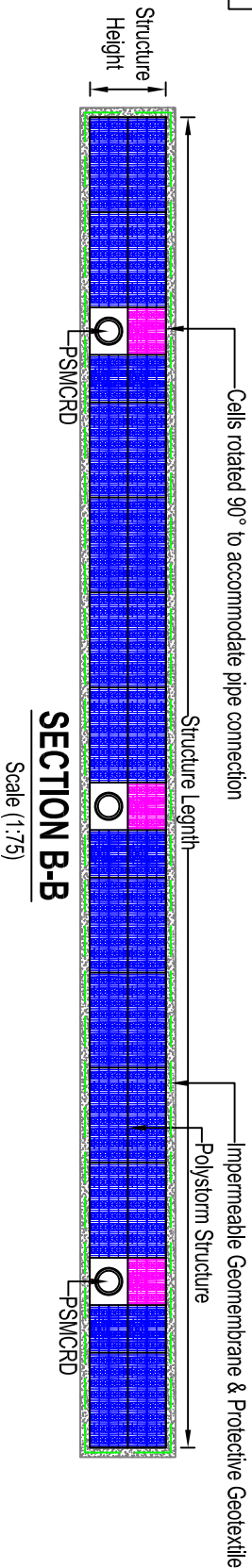
TYPICAL OFFLINE STORAGE PLAN

(Scale 1:75)



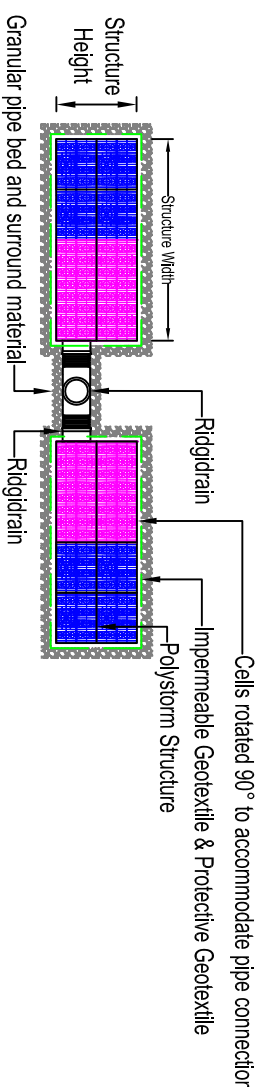
SECTION A-A

Scale (1:75)



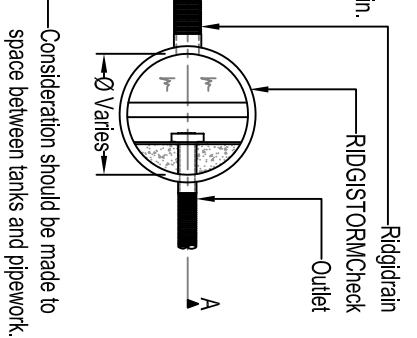
SECTION B-B

Scale (1:75)



SECTION C-C

Scale (1:75)



VENTILATION NOTE

For information on Ventilation Options please refer to drawing ref: PSM_SD_PSM_002

MANIFOLD NOTE

Where single pipe hydraulic capacity is exceeded manifold detail may be required. For information on Manifold connections please refer to drawing ref: PSM_SD_008

NOTE A

Polystorm Inspect and Access can be used with this system. For information on tank cover depths please contact the Technical Team:- 01509 61500

NOTES

1. All dimensions in millimetres, unless otherwise stated.
2. All dimensions are nominal and may vary within manufacturing or construction tolerances.
3. All site temporary and enabling works by others.
4. Polypipe products to be installed in accordance with Polypipe civils recommendations (refer to Polypipe technical guidance for further information), giving due consideration to the requirements of the organisation who will be taking ultimate ownership of the installation.
5. This drawing is intended for guidance only. Confirmation of the information contained within this document should be sought from the consulting engineers before final design or construction activities commence.

The information in this document is of an illustrative nature and is supplied by Polypipe Civils without charge. This document does not form the whole or any part of a contract or intended contract with the user. The information within this document should not be solely relied upon to determine the suitability or installation requirements of our products for a proposed application and expected site conditions; expert advice should be sought in this respect. Final determination of the suitability of any information or material for the use contemplated and the manner of use is the sole responsibility of the user and the user must assume all risk and liability in connection therewith. Further information with regard to liabilities may be found at www.polypipe.com/discclaimer.



Polypipe Civils

Charmwood Business Park,
North Road, Loughborough,
Leicestershire, LE11 1LE

Tel: 01509 615100
Fax: 01509 615215
www.polypipe.com/civils
www.polypipe.com/wms

POLYSTORM STANDARD DETAILS

PROJECT

POLYSTORM STANDARD DETAILS

STATUS

FOR INFORMATION

DATE

17/03/16

DRAWN BY

JL

ORIGINAL SIZE

A3

SCALE

AS SHOWN

DRAWING NO.

PSM_SD_EG_004

REV.

OFFLINE STORAGE EXAMPLE FOUR