

Within this document we talk about Hole Saw Sizes.

Boss adaptors

These accept pipe via a boss ring adaptor, 117 straight or bent.

- Cut out centre of boss. For correct size hole cutter refer to (Fig. 1).
- Remove swarf and clean mating surfaces with Terrain cleaner 9101 (Fig. 2).
- Apply solvent cement 9100 to all mating surfaces (Fig. 3).
- Position boss adaptor, twist to ensure contact then hold under pressure for a few moments (Fig. 4).
- Remove excess cement (Fig. 5).

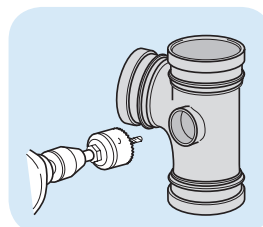


Fig. 1



Fig. 2

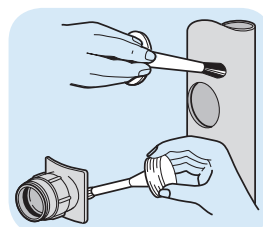


Fig. 3

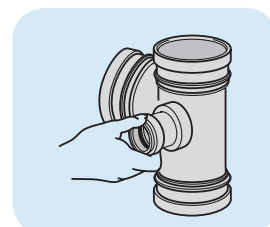


Fig. 4



Fig. 5

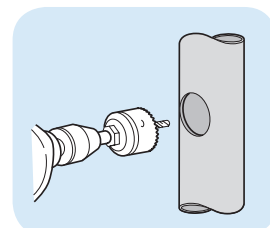


Fig. 6

Connecting waste pipes to soil stacks via two part boss 112 and adaptor saddle 115P

- Cut correct hole size and deburr (Fig. 6). For correct size hole cutter refer to table below.
- Remove swarf and clean mating surfaces with Terrain cleaner 9101 (Fig. 7).
- Apply solvent cement 9100 to all mating surfaces (Fig. 8).
- Pass inner component outward through hole from the inside of the pipe and push the outer component firmly on to it ensuring that the key and keyway are lined up. Ensure engraving reads: top 91¼ for waste top 88¾ for vent (Fig. 9).
- Insert toggle bolt and screw up until boss is fully closed with flanges in contact with the pipe both inside and outside. (Fig. 10).

NOTE: Leave toggle bolt in position for approximately 15 minutes.



Fig. 7

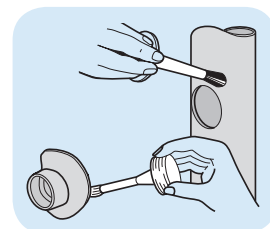


Fig. 8

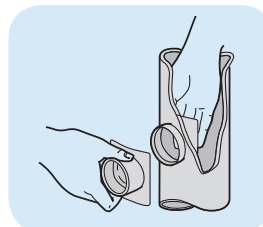


Fig. 9

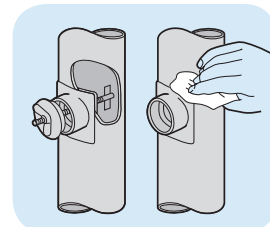


Fig. 10

Hole Saw Sizes

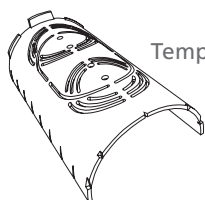
Aperture dia.	To suit fitting ref.
33mm	281.43
48mm	112.4.125 - 135.3 - 112P.4.125
51mm	117* - 112P.4.15
57mm	112.X.15 - 115P.4
60mm	122.4.125 - 112P.4.2
64mm	122.4.15
70mm	112.X.2
73mm	135.4 - 135.6
75mm	122.4.2

*All sizes

All dimensions in mm unless otherwise stated

Self locking boss 122

- Cut correct hole size and deburr. For correct size hole cutter refer to table on page 56 (Fig. 11).
- Slacken nut on boss to full extent. Enter boss into hole keeping the keyway to be the last piece to enter the hole. Tighten outer locking nut (Fig. 12).
- Once satisfied that the boss fits neatly into the pipe remove and clean all mating surfaces with Terrain cleaner 9101 (Fig. 13).
- Apply solvent cement 9100 to all mating surfaces (Fig. 14).
- Re-enter boss into the pipe. Screw up until hand tight and remove excess cement (Fig. 15).



Template available
ref: 9105.500.

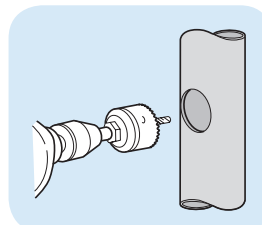


Fig. 11

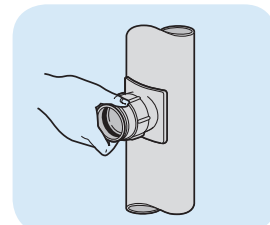


Fig. 12

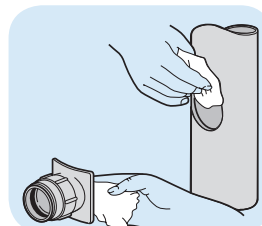


Fig. 13

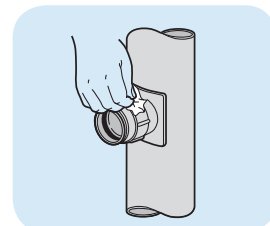


Fig. 14



Fig. 15

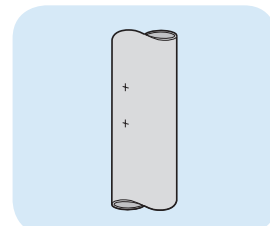


Fig. 16

Access door 135 (110mm & 160mm)

- Set out centre lines as described on inside of access door. Check aperture will be parallel with axis of pipe (Fig. 16).
- Drill two overlapping holes of correct size at 45mm centres (Fig. 17).
- Remove sides of aperture using a medium file (Fig. 18).
- Slacken door to its fullest extent. Push the inner part of the door into the hole at a slight angle turning at the same time. When it is fully entered, turn it parallel to the axis of the pipe ensuring that the inner part locates into the hole. (Fig. 19).
- Ensure seal ring is lubricated prior to fitting. Tighten the screw whilst pulling the door outwards. Do not over tighten (Fig. 20)

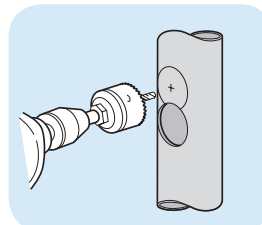


Fig. 17

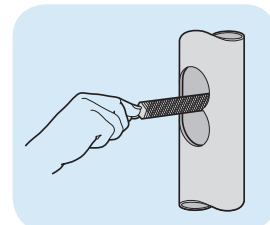


Fig. 18

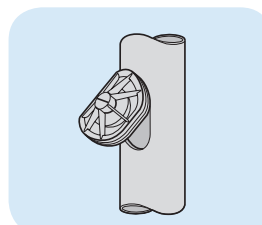


Fig. 19

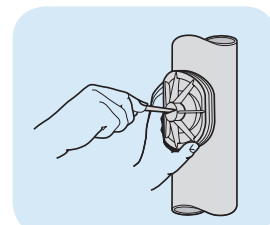


Fig. 20

Hole Saw Sizes	
Model No.	Aperture Diameter
112P.4.125 	48mm
112P.4.15 	51mm
112P.4.2 	60mm
112.3.15 	57mm
112.4.125 	51mm
112.4.15 	57mm
112.4.2 	70mm
112.6.15 	57mm
112.6.2 	70mm

Hole Saw Sizes	
Model No.	Aperture Diameter
281.43 	33mm
135.3 	48mm
135.4 	73mm
135.6 	73mm
115P.4 	57mm
122.4.125 	60mm
122.4.15 	64mm
122.4.2 	75mm

Hole Saw Sizes	
Model No.	Aperture Diameter
117.15.90 	51mm
117.2.150 	51mm
117.2.90 	51mm
117.125 	51mm
117.15 	51mm
117.2 	51mm



Contact Us

to find out about our Technical Workshop here
commercialenquiries@polypipe.com

Next month's
 Technical Bulletin -
 WC Pan Connector
 Manifold