

# Silavent Green Line CMX

## Mechanical Extract Ventilation

Energy efficiency combined with discreet and quiet operation.

Provides a healthy living indoor environment through continuous extract ventilation and offers an extremely low Specific Fan Power down to 0.24W/(l/s) to significantly reduce energy usage and provide a higher SAP rating.

- SAP Appendix Q listed
- Extremely low Specific Fan Power
- Exceptionally compact (125mm deep) and lightweight (3.25kg), ideal for small ceiling voids
- High extract performance, quiet operation
- Easier and quicker to install and maintain
- Designed to fit perfectly to **DOMUS** plastic duct

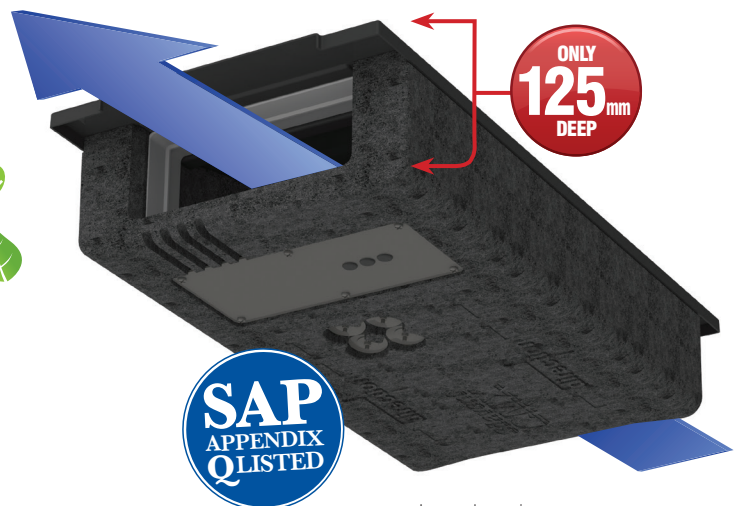


Image shown is representative only.



For further technical information please call our Customer Service team on

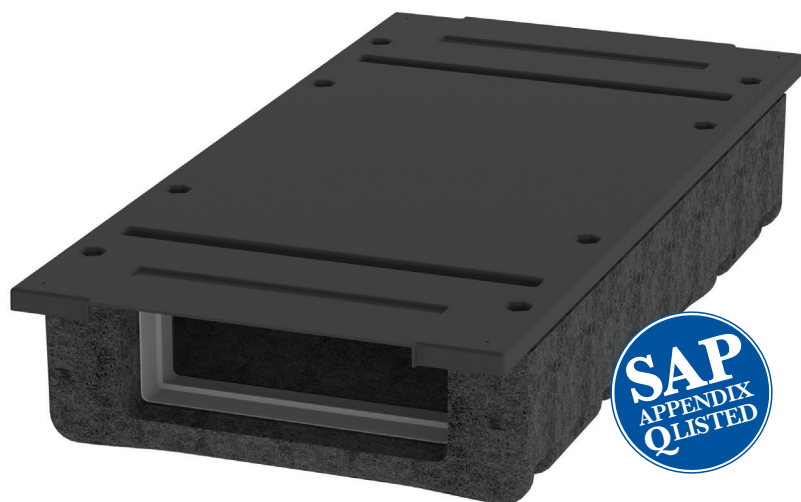
08443 715523

**Silavent**



## CMX

## Silavent Green Line Range



## Technical Data

Description	Data
Max Extract Volume (m <sup>3</sup> /h)	430
Max Extract Volume (l/s)	120
Max Pressure (Pa)	650
Max Power (W)	83
Supply Frequency (Hz)	50
Voltage (V)	230
Max Sound dB(A)@3m	Min: 19 Max: 34
Socket Size (mm)	220 x 90
Insulation Class	1
Dimensions H x W x D (mm)	125 x 710 x 340
Weight (kg)	3.25
Max Temperature (°C)	40
Warranty	2 yrs

## Features and benefits:

- SAP Appendix Q listed
- Will help reduce the DER (Dwelling Emission Rate) to secure additional SAP points
- Energy efficient: Specific Fan Power down to 0.24W/(l/s)
- Exceeds 2010 Building Regulations
- Energy Saving Trust compliant
- Compact (125mm deep) and lightweight (3.25kg), ideal for small void depths
- Two extract ports enable straightforward duct connection
- Distinct moulded EPP casing reduces noise
- High airflow performance up to 120l/s
- Performance is maximised when used with Domus Megaduct (220 x 90mm)
- Supports kitchen and up to 6 wet rooms
- Easier and quicker to install and maintain
- Flexible home owner control (3 speed options)
- Patents pending

## Installation:

- Suitable for installation in developments with a floor area up to 275m<sup>2</sup>
- Flexible installation: can be fitted horizontally or vertically:
  - Inside a kitchen cupboard or utility room
  - Direct to a ceiling or in a loft space

## Recommended ancillary duct products:

- Domus 220 x 90mm rectangular or Ø150mm round rigid duct system (970 adaptor req)
- Domus CMX air supply kit with filter (CMX-ASK1), Brown (B) and white versions (W) available

## SAP Q Performance Data

Application	SFP W/(l/s)
Kitchen & 1 wet room	0.24
Kitchen & 2 wet rooms	0.25
Kitchen & 3 wet rooms	0.29
Kitchen & 4 wet rooms	0.35
Kitchen & 5 wet rooms	0.43
Kitchen & 6 wet rooms	0.54

## Model Available

Code	Description
CMX-S	CMX MEV unit

## Controls Available

Code	Description
ANC848A	Low/boost switch
ANC849A	Occupied/unoccupied - low/boost switch
ANC850A	Low/boost/purge switch
ANC108A	Adjustable overrun timer
ANC802A	Humidity control with adjustable overrun timer
ANC808A	Humidity control with adjustable overrun timer and manual override with neon indicator
ANC846A	Duct mounted humidity control with remote sensor and adjustable overrun timer
ANC813A	PIR movement sensor with adjustable overrun timer
ELE150R	6 switched live backfeed-protected junction box